



RX6-500

The RX6-500 SCARA robot is a great choice for precise mechanical assembly, material handling, packaging, and screw driving industrial applications. Compact and light weighted, it has a payload capacity of up to 6 kg and 500 mm armreach.



Highlights

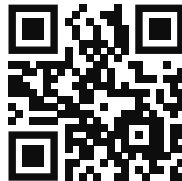
- 500 mm maximum range
- Up to 6 Kg Payload
- 6094 mm/s complex speed

Main features

| | |
|-------------------|-----------------------------|
| Number of axes | 4 |
| Maximum payload | 6 kg |
| Nominal load | 2 kg |
| Maximum range | 500 mm |
| Protection | IP20 |
| Weight | 18 kg |
| Installation area | 195x169 mm |
| Power supply | 230 VAC, 50-60 Hz, 800 W |

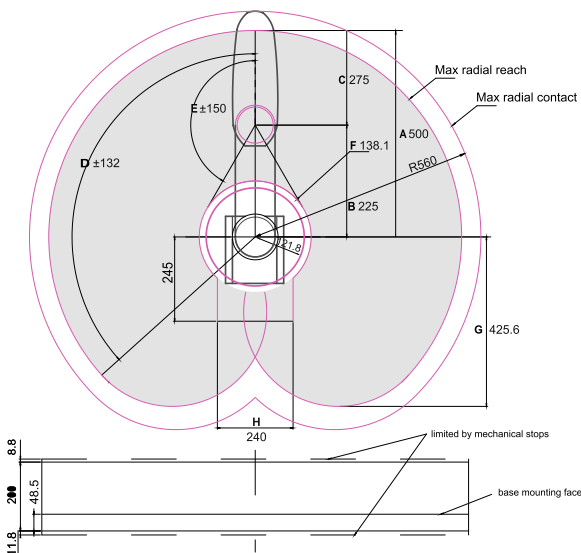
Axis data

| Axis | Stroke | Max Speed | Repeatability |
|------|----------|-----------|---------------------|
| 1 | ± 132° | 375°/s | ± 0.025 mm Axis 1,2 |
| 2 | ± 150° | 588°/s | |
| 3 | 0~200 mm | 1100 mm/s | ± 0.015 mm Axis 3 |
| 4 | ± 360° | 2000°/s | ± 0.01° Axis 4 |



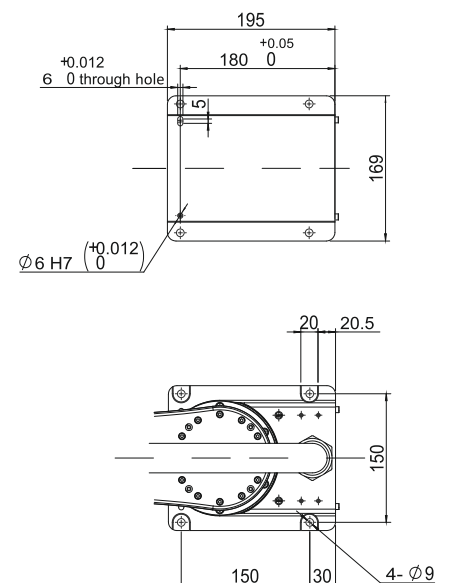
ACCESS HERE FURTHER TECHNICAL INFORMATION

Operating Range



- A Length-Arm #1 & Arm#2 (mm)
- B Length-Arm #1 (mm)
- C Length-Arm #2 (mm)
- D Motion range-Joint #1 (°)
- E Motion range-Joint #2 (°)
- F Motion range (mm)
- G Motion range of backside (mm)
- H Motion range (mm)

Drilling Pattern



Integration efficiency

Full integration with a selection of EtherCAT TRIO MOTION controllers, synchronizing multiple machine and robot axes within the native Trio software environment. The Controller has integrated robot path planning and can be programmed to control **more of the machine solution and integrate machine elements, including additional axes**

Such a coordinated system simplifies the programming and maximizes performances.



Upstream Communication Possibilities

Modbus TCP/IP Via Ethernet Port



TCP/IP Sockets Via Ethernet Port



EtherCAT

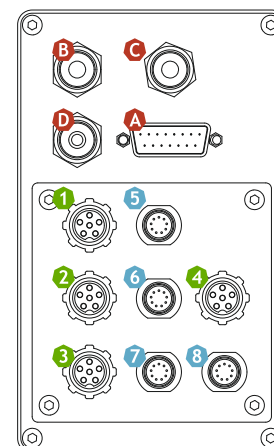
TRIO
MOTION TECHNOLOGY

Motion Perfect

Connectivity

The RX6-500 SCARA gives the possibility to connect compressed air systems and electrical power via a 15 pin D-SUB connector for pneumatic and electrical end.

- | | |
|--|-------------------------|
| A 15 pin D-SUB Electric Connector | 1-4 Power I/Os |
| B 6 mm Pneumatic Connector | 5-8 Encoder I/Os |
| C 6 mm Pneumatic Connector | |
| D 4 mm Pneumatic Connector | |



Mechanical Dimension

